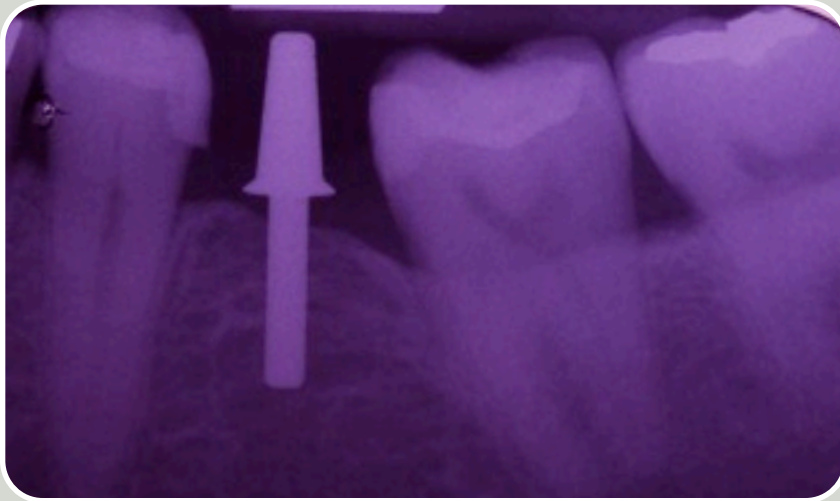


October 2009

Dental Secret Seminars

IMPLANT UPDATE

By Dr. Ebless V. Báez Alers



INCREASE ACCURACY BY PLACING MARKERS

Getting precision thru the use of scale markers give us confidence and help us to be more predictable

When placing Implants, I've come to the conclusion over the years that we need to be precise when placing Implants to be predictable and accurate avoiding perforations and traumatizing nerves. As we are working in a small, close, delimited environment that requires for us to be exact. There is just a tiny room for errors. Also we have to be

more careful than ever in the www.whocanissue.com era and cover ourselves against malpractice. If we stick to the protocol everything will be OK.

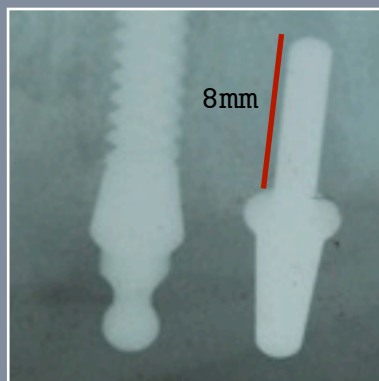
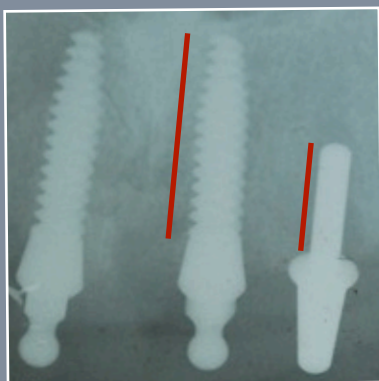
We always have to measure before we place the implant to know which implant is the correct length size and diameter for the vertical length of bone we have in the



Parallel Pin

Oco parallel pin is unique in giving us the perfect digital marker, length, axial inclination, emergence profile, even pre-visualize occlusion

DIGITAL PRECISION



panoramic or CT Scan. I usually measure first using the template to have an estimate of the Implant length that i will be using. But after my first pilot drill i always use the parallel pin as a marker when i need to be exact. I know i have 8mm in the post part of the parallel pin. That way i can corroborate the length, the inclination and make such corrections **before going to the final length with my pilot drill."**

Its important to re-check the with the parallel pin after we make are first 8mm to 10mm osteotomy.

If Periapicals

Once we place the parallel pin we can do different things. If you have a digital X-ray periapical the magnification ratio w`d usually be 1:1 and you can measure direct within the software that comes with it. You have to check with your vendor and corroborate that ratio before hand.

If Panoramic

If you Use the template make sure template mm`s

coincides with the parallel pin 8 mm. If it does(usually the 125% magnification ratio works.)

If none of this works for you then lets do it in photoshop, this is a very accurate method. Just digitize the Panoramic or PA with your parallel pin (more accurate) and send it to photoshop and there you can establish the scale with your marker(parallel pin) and voila!!!!. You've become the more accurate dentist in your area.

For more tips you can go to www.idoctorcmd.com to get this photoshop video tutorial in spanish and english language

